

**TID** 2012 Award  
Taiwan Interior Design

居住空間/複層 Residential space / Multi Level

空間演繹 · 立體派  
Space Deduction · Cubism

禾禧設計解決方案  
HHC DESIGN SOLUTION

主持設計師  
Chief Designer

張向榮 Jacky Chang

董紀威 Jerry C. Dung

協同設計師  
Co-designer

黃立安 Alfie Huang

攝影者  
Photographer

岑修賢 SAM



Through the combination of a multi-elements stacking up layers, a spatial frame is molded within the open public space. A selection of warm materials is chosen to narrate in this double floors atrium room. Layers of materials are being overlaid to reinforce the key of the continuity of concepts.

透過多種元素的疊層組合，讓開放性的公共空間裡形塑出疊層的空間框架，在挑空的雙層空間裡，採取一種具溫度感的材質鋪陳，多層次材料的重疊運用則是強化概念連續性的關鍵。

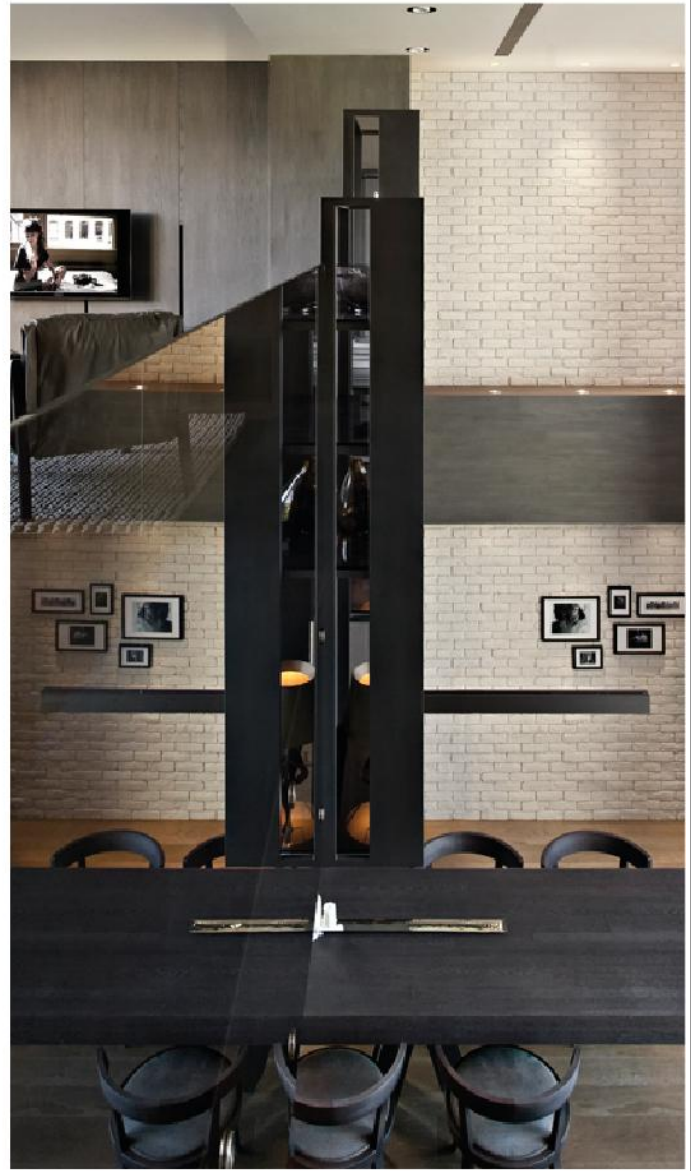
Space Deduction · Cubism  
空間演繹 · 立體派



A stacking up multi-layered  
3-dimensional frame

多層次疊層的立體框架



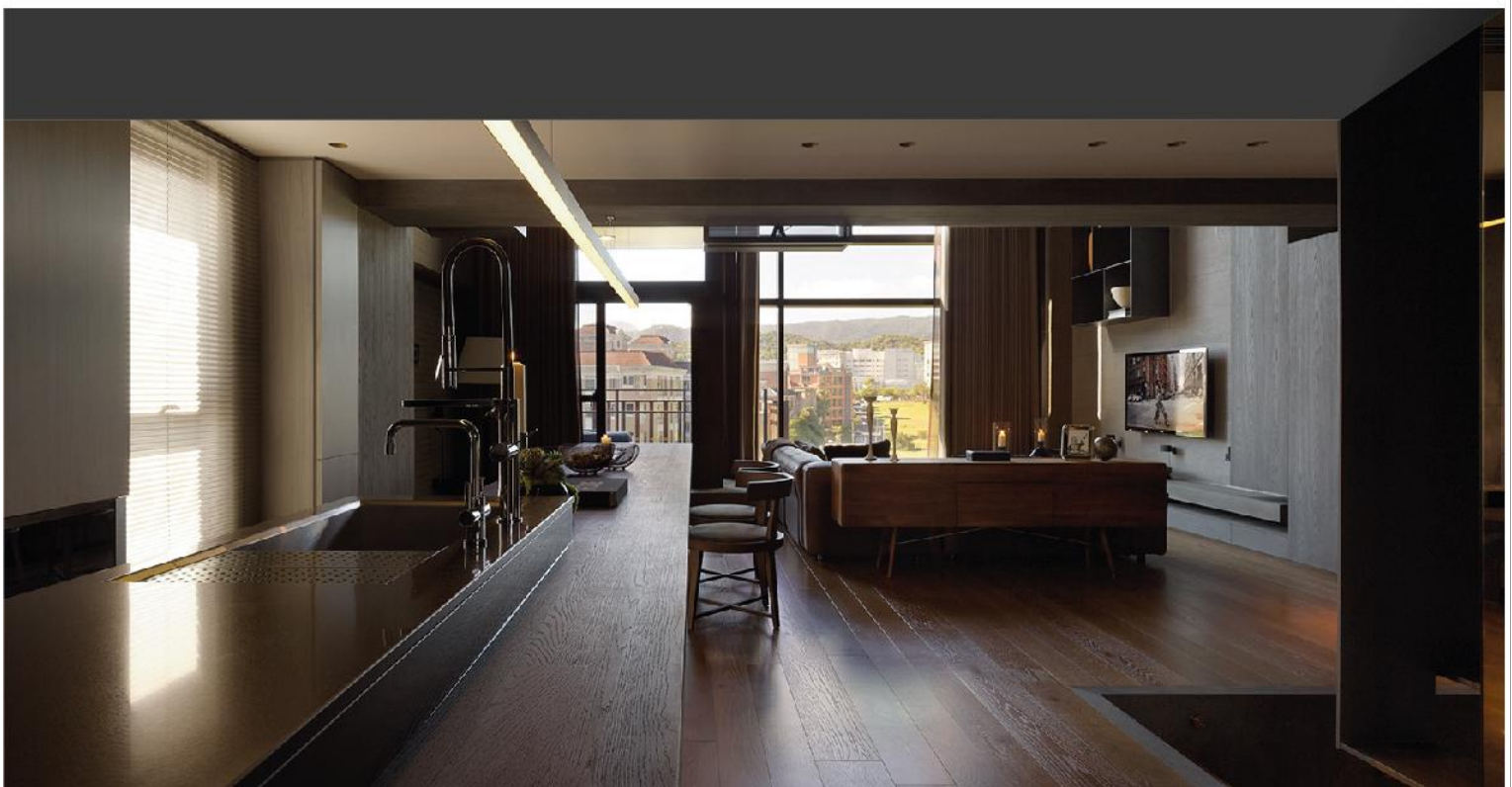


## The open longitudinal horizontal extension

長向開放式水平延伸

The public space has used an Open Space concept to break zoning boundaries. A more than 10-meter long table is placed to link up the open kitchen and the dining room. The table is not only the major horizontal axis, but is also the visual focus in the place. At the same time, to echo with the vertical elevated atrium of the living room, the two volumes share the outdoor green and the excellent landscape view from the front balcony, and have also fused and blurred the boundaries between each other.

公共空間以Open Space概念打破區域界線，十多公尺長的長桌串連起開放式廚房與餐廳，既是主要的水平軸線，更是空間裡的視覺焦點。同時，對應起居間的垂直挑高區域，共享著戶外綠地與前陽台的極佳挑高視野，也融合模糊了彼此界線。







## The vertical extension of the exhibition components

展示構件的垂直延伸

There are three large wire mesh textile works covered by steel components inlaid at the mezzanine floor. Not only the work has created a different functional use in between the floors, but also cleverly pins out the most characteristic 3-dimensional overlay effect in this space. Through this installation, the upper and lower floors are skillfully strung as one entity.

三件由鐵件構組包覆網狀織品的大型展示櫃鑲嵌在夾層樓板，不僅在樓層間創造了不同的機能運用，巧妙點出該空間最具特色的立體疊層效果。透過這個裝置更巧妙連通上下樓層成為一個整體。

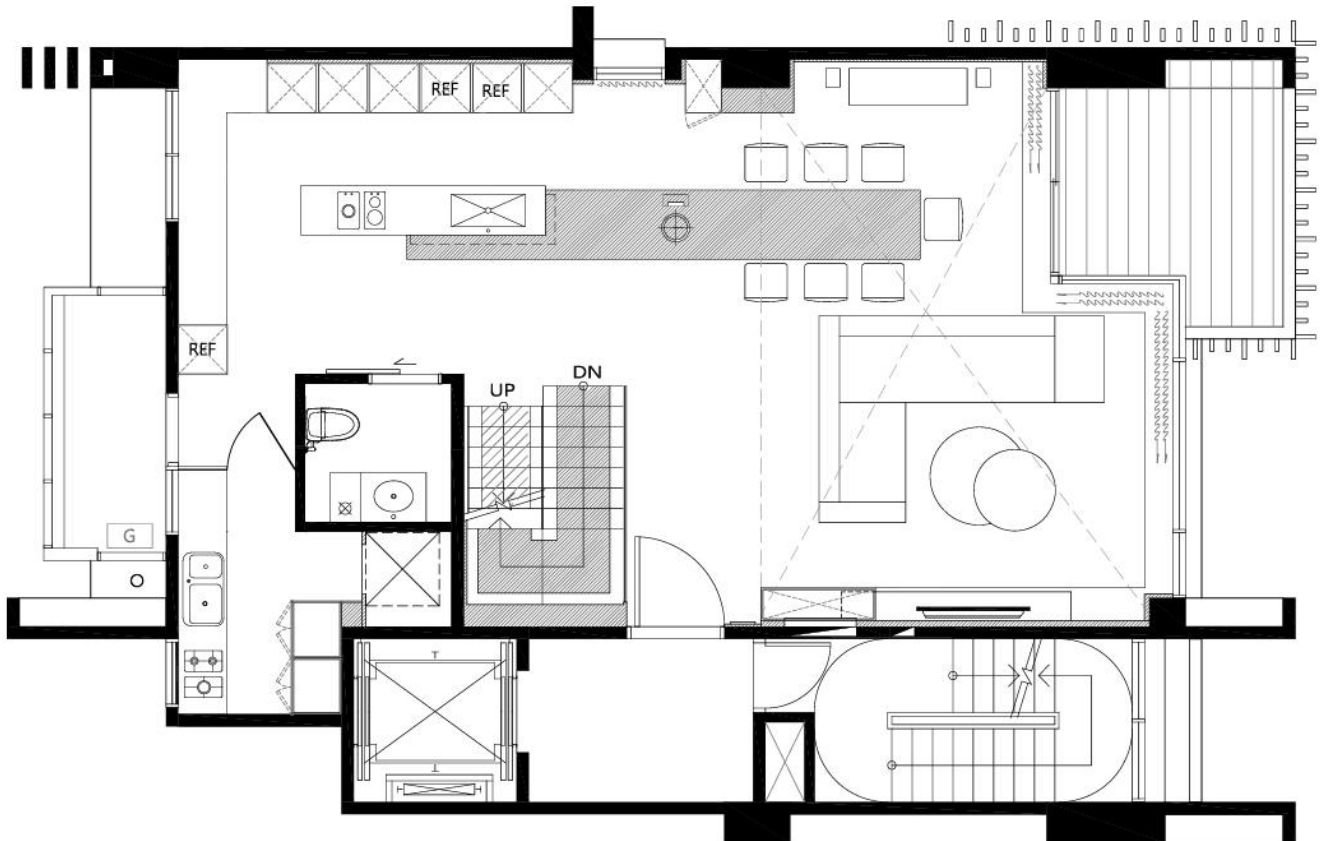






The open longitudinal  
horizontal extension

長向開放式水平延伸



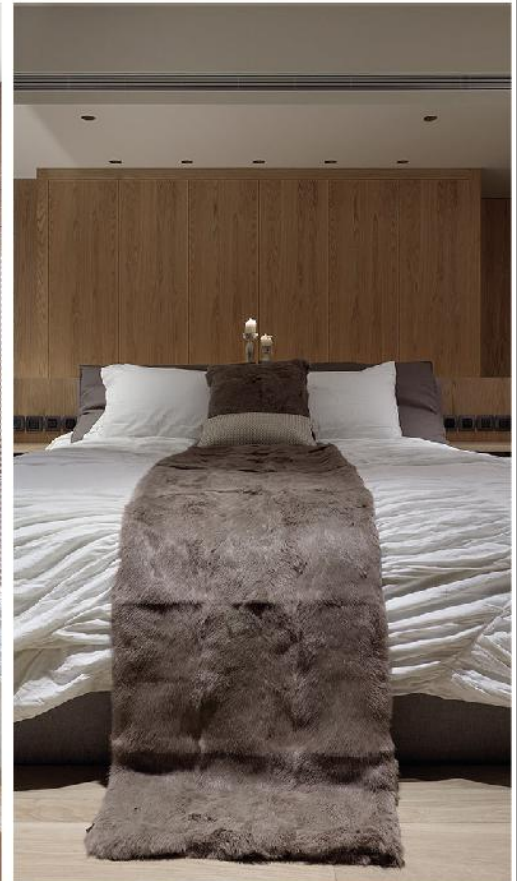




The open longitudinal  
horizontal extension

長向開放式水平延伸

---





## A 3d panoramic landscape view

三維立體的視野觀景

The combination of the 3-dimensional stacking space formed by the fourth floor and the roof terrace, the bottom to top gigantic floor window, the visual penetrable fence of the mezzanine, and the elevation design of the folding door of the terrace create a 3d panoramic view of the landscape.

四樓與屋頂平台挑高空間所形塑的立體疊層空間，由底至頂的巨大落地窗，以及夾層上具穿透性的圍欄、露臺落地折門的立面設計，創造了一覽無遺的三維立體視野觀景。

