

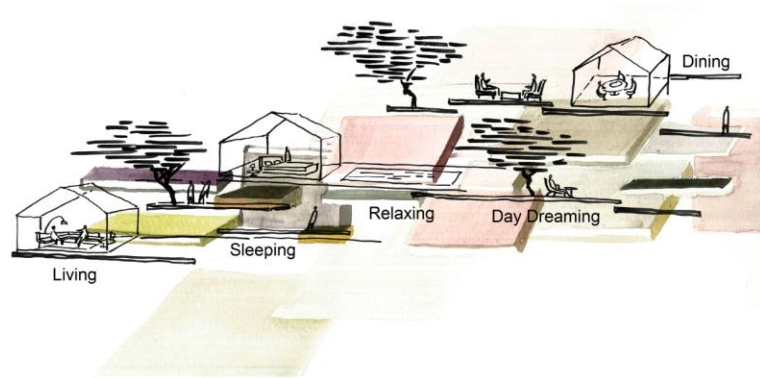
TID 2012 Award
Taiwan Interior Design

居住空間/複層 Residential space / Multi Level

Sanya Retreat

何宗憲設計有限公司
Joey Ho Design Limited

主持設計師 Chief Designer	何宗憲 Joey Ho
協同設計師 Co-designer	黎凱婷 Momoko La
	吳志湖 Derek Ng
攝影者 Photographer	吳永長 Wu Yong Chang



Sanya Retreat

Natural elements surround a tropical island of Sanya Retreat. Independent houses are clustered, forming a tribal pattern in the natural landscape. As in the heart of village planning, communities share spaces and nature. Nature weaves its way through a village like a trickling stream; tracing the elements of sound: rustling of leaves in the wind, shimmering sunrays against the water surfaces.

Constantly engaging the elements of nature, rooms in Sanya Retreat open up to the sky and open out to the greens. Deep overhanging roofs and an open kitchen allow guests to seek refuge and comfort from the scorching sun, just as one would under the large embrace of branches and leaves.

A generous bedroom enjoys the exposed facing of one of the largest gardens of the village. Designed to extend the connection to the green elements, outdoor gardens and water feature form seamless architectural elements. This 'green room' basks in the idyllic sounds of nature.

This village-like Sanya Retreat is never separate from nature. In the same way, the one is never separate from home, when within nature.





- 1. Family room
- 2. Reception room
- 3. Day terrace
- 4. Dining room
- 5. Living room
- 6. Swimming pool
- 7. Private garden
- 8. Master bedroom
- 9. Private garden
- 10. Entertainment room
- 11. Change room
- 12. Changing
- 13. Swimming pool
- 14. Swimming pool
- 15. Private garden
- 16. Private garden
- 17. Entertainment



- 1. Office
- 2. Security room
- 3. Villa kitchen
- 4. Entertainment room
- 5. Bar
- 6. Party room
- 7. Reception room
- 8. Guest room
- 9. Garden
- 10. SPA
- 11. Suite
- 12. Guest room
- 13. Private garden
- 14. Guest room
- 15. Maid's room
- 16. Garage
- 17. Prayer

