

TID 2012 Award
Taiwan Interior Design

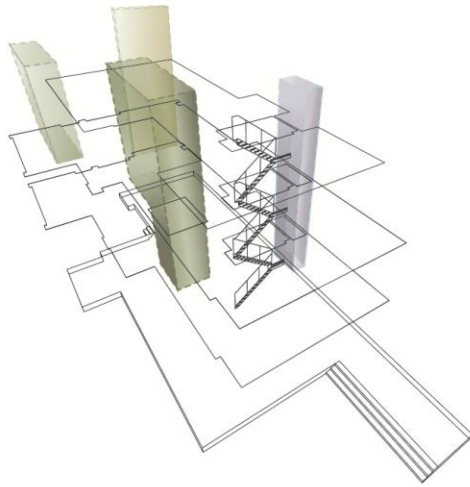
商業空間 Commercial space

垂直森林
VERTICAL FOREST

水相設計有限公司
WATERFROM DESIGN CO.LTD

主持設計師 Chief Designer	李智翔 Nic Lee
協同設計師 Co-designer	陳曉伶 Joanne Chen
	蔡凱竹 Bam Tsai
攝影者 Photographer	李國民 LEE,KUOMIN

VERTICAL FOREST



垂 直 森 林

在高密度的聚落中，發展出這座垂直森林，天井與露臺架構連結所有的空間動線，並界定出居者不同行為模式所需的隱私區塊，而垂直向的天井是整座建築的肺葉，讓建築體外部與內部進行對流循環，是最重要供給呼吸的生態層。

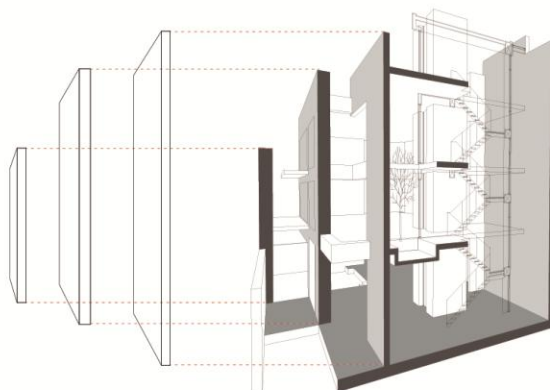
The sky well and the patio are the most important element of this space which decide stream line.
Designer set a vertical forest to help the air circulation between indoor and outdoor, like a lung for air-breathing animal.



SKIN

建築立面藉由三層尺度、材質各異的皮層組成，
以不同開窗角度引進不同角度的光線進入室內，在層與層之間，
依序產生出不同功能性的天井、露臺與貫穿2~4樓的垂直綠化花園，
在進與退之間與建築本體產生對話。

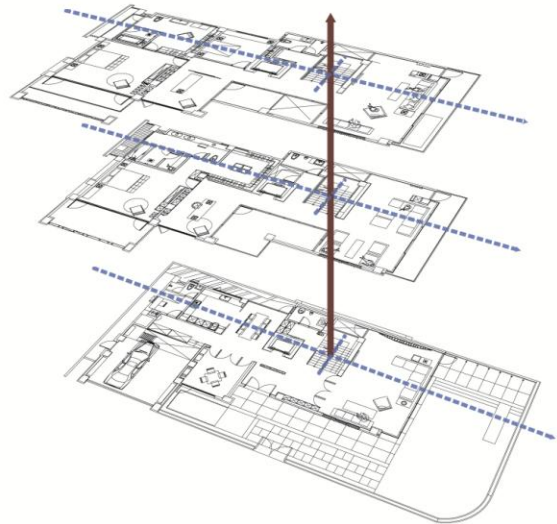
The facade was combined by three different material and build in different scale.
The sunshine irradiate throw different windows by different direction.
All the layers has different function and view.
The forest distribute in the building vertically, they merge with the architecture perfectly.



SKYLIGHT

在建築設計上，利用四個不同功能性的天井及五個退縮建築本體的露臺，使光線透過不同方向進入室內，解決與周遭環境棟距過近的問題。

The concept of the architecture is utilizing four different sky well and five patio appear by retreating the architecture to solve the problem: the house is too closed to other buildings.

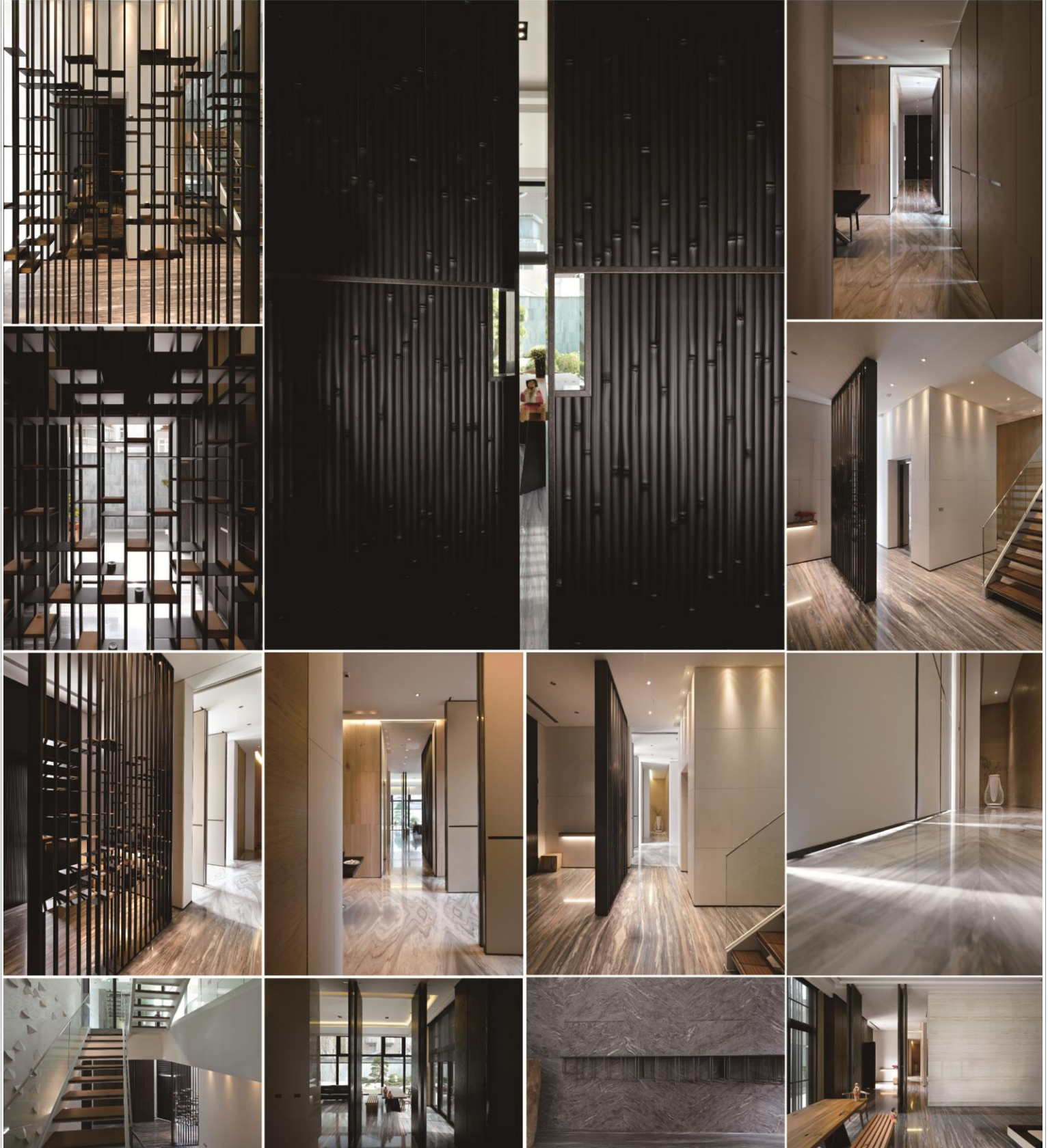


S C R E E N

如同行進在中式建築外庭與內庭的層層推進，藉由半穿透鐵件屏風，讓訪者先嗅到檜木香氣，再轉進黑色內斂的竹節折門進入廳堂，使長向廊道產生駐足的端景，暫留、行進、再探察宛如一場遊園夢。

Designer wants to keep the delight on the path while we walk in the traditional Chinese architecture. The fence makes visitor could smell the fragrance of cypress but see the beautiful metal structure.

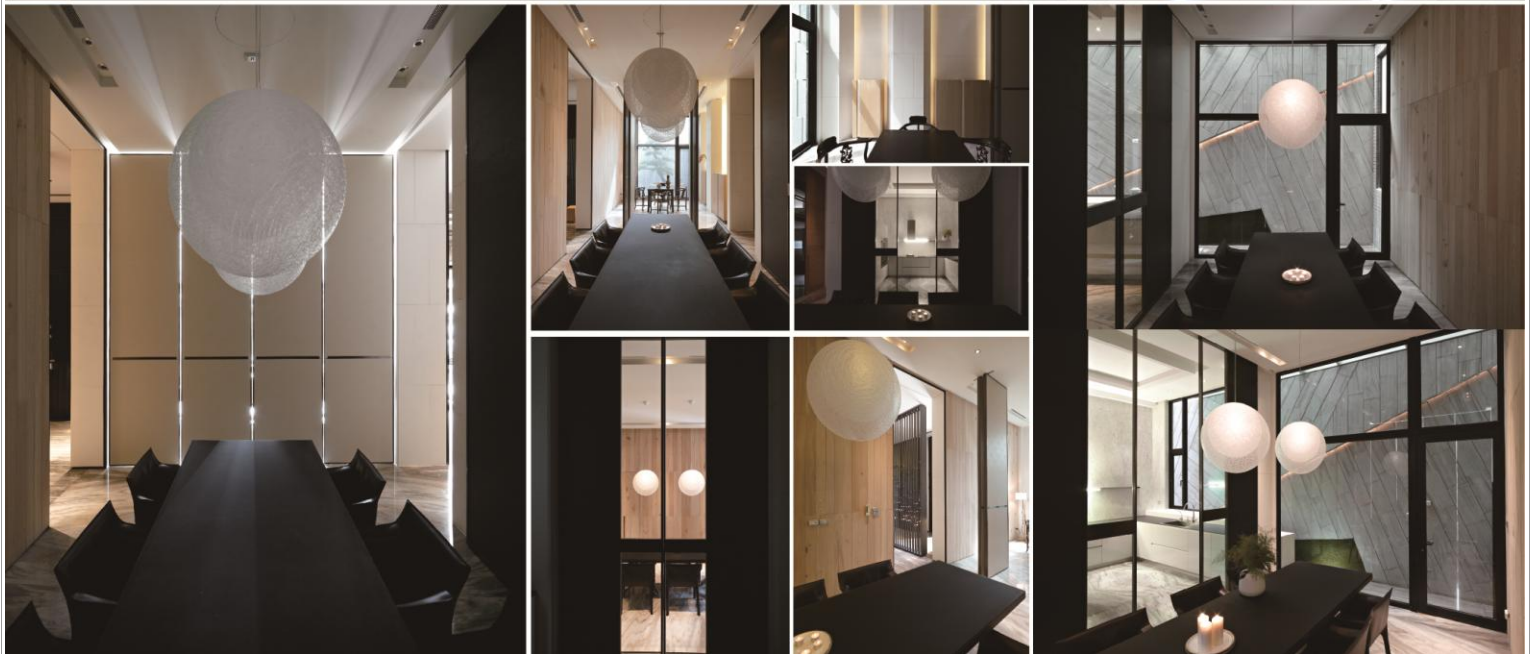
Go toward the living room, there will be a swing door decorated by black bamboo, becomes a focal point of a long corridor. We can view, we can read and even go through the beautiful structure



S W I N G

「門」就像一對眼睛，在開闢之際空間表情也隨之起伏，有時是全敞的傲然自信，又也是半闔眼的恍惚神遊，在門縫中觀人、觀影的窺視中得到樂趣。

As eyes to human being so is a door to interior space. Close or open, a door gives the space totally different atmosphere.



S H E L T E R

以光廊連接每一層主空間與次空間，最重隱私的浴室與臥室，則是從天井灑光的非直射光線，呈現靜謐柔和的內庭，讓行進與生活本身都有最適切的光合運動。

Using the lighting corridor to connect the major space and the minor space. For the private space, there is a sky well reveal soft lighting. All the area has appropriate nature sunshine.

