

**TID** 2012 Award  
Taiwan Interior Design

居住空間/複層 Residential space / Multi Level

KC 開心農場  
KC GARDEN

中怡設計事業有限公司  
CYS.ASDO

主持設計師  
Chief Designer

沈中怡 Chung Yei Sheng

協同設計師  
Co-designer

江易書 Paul Chiang

攝影者  
Photographer

李國民 K.M. Lee

KITCHEN  
 GARDEN  
 FARM +  
 LIFE  
 STUDIO PHOTOGRAPHY



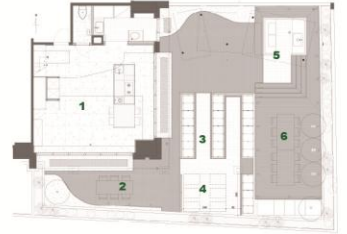
- 1. KITCHEN+STUDIO
- 2. COFFEE
- 3. GARDEN
- 4. GREEN HOUSE
- 5. BBQ AREA
- 6. DINING AREA



□ interior space  
 ■ outdoor space



□ + ■ extend  
 To create a comfortable living space



## KC GARDEN

Different from the conventional proportion of spatial deployment "KC Garden" is an apartment with only one third of interior space. This brought a challenge where the challenge meant a great opportunity to explore a new way of living style.

The people who dwell here are a couple, Kevin and Claire, who host a TV cooking show and are gaining popularity. They hope this apartment is not just a place for them to live, but also a venue for the show. Also the uniqueness of apartment should convey a message that healthy lifestyle and a good diet is close to the way of life.



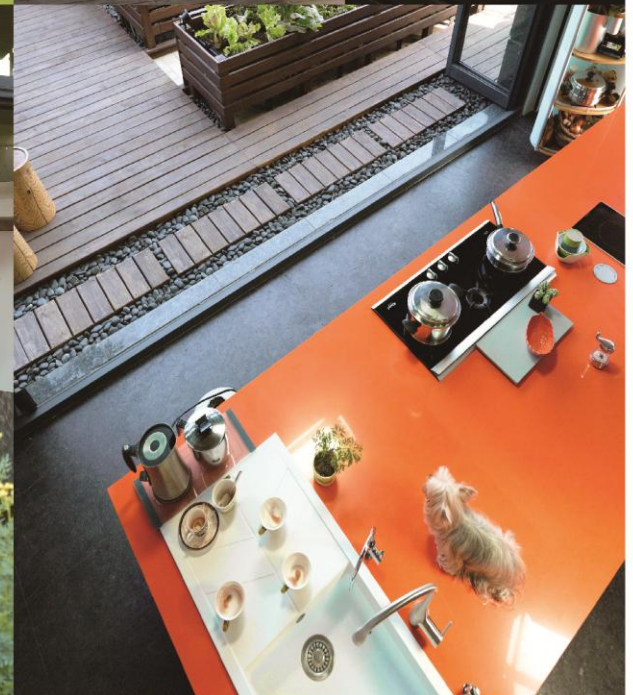
KC GARDEN



## A NEW WAY OF LIVING STYLE

The main “element” of the apartment is an island style kitchen against a window facing the outdoor view. The extra expanding balcony garden has many edible vegetables, fruits and spices as the garden also provides food ingredients for the TV show.

Landscaping was a very important measurement for the design. Even the apartment needs to satisfy living function, it emphasized how dieting habits put great influence on space, and a living space can explain pretty well the value of life and its content.





**FLOATING FLOORS**

To provide for so many pragmatic requirements, the space needed a big change. Two separated mezzanine levels were built; one is for the couple's bedroom and the other is for a storage space and bathroom. An open spot in between the two mezzanine floors can be used to lift up a TV camera that allows for shooting at every angle including a bird-eye's view.

