

TID 2011 Award
Taiwan Interior Design

商業空間 Commercial space

空間的蒙太奇
DN Innovacion _ Visual Taste

詠翊設計股份有限公司 Very Space International

主持設計師
Chief Designer

劉榮祿 Liou Rung -lu

協同設計師
Co-designer

劉沂娟 Cathy Liu

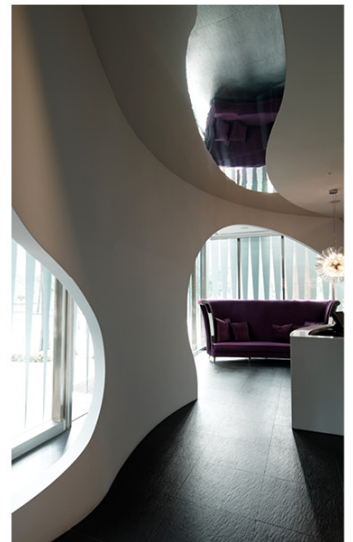
黃沂騰 Eaten Huang

攝影者
Photographer

李國民 Kuo - Min Li

空間的蒙太奇

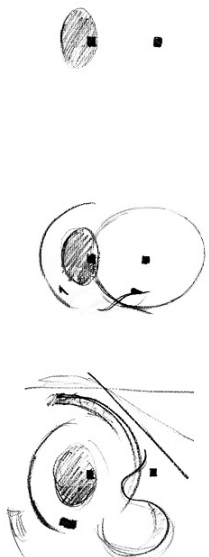
WE WANTED TO CREATE AN EXPERIENTIAL SPACE. IT SHOULD BE SOMETHING SCULPTURAL, FLUID AND UNEXPECTED.
WHAT INTERESTED US WAS NOT THE CELLAR ITSELF, BUT THE TRANSITIONAL SPATIAL RITUALS BETWEEN IT AND OTHER SPACES.

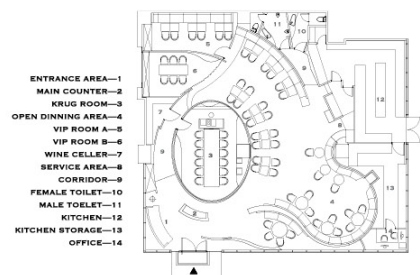
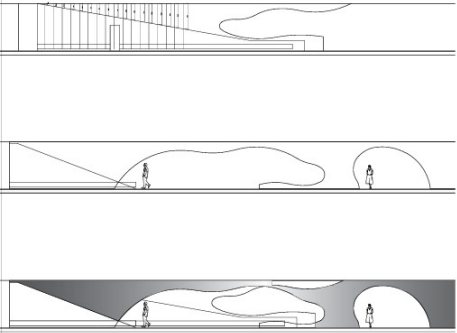


看似蒙太奇般的絢麗表象，其實蘊涵著深邃的理性解析。
透過層次的建構，由內而外、由緊密到開展，將空間有秩序的分配出各種功能屬性，而此環狀層次的交疊更衍生出雕塑性的空間氛圍。
空間與其虛無縹緲，我們假設一種視覺焦點：蒙太奇。蒙太奇拼貼的，可能是空間與空間的無限可能，在曲折轉角之外的又一村，可能是時間與空間的通俗並列，卻創意出X與Y軸的物理總和。

論空間，除去彩通配色的五花八門，採以繁複的流體與曲線構建“霧”與“棉”，“景”與“景”之間曖昧的顛連、材質的轉變、如金屬、如木質、如簾布，如石材—是觸摸，呼吸，感受的體驗。在流動的空間感中，視覺重現而反覆，而不時細微的突變，是必須靠“感受”的能力重新定義。但“理性之美”就是在我們容易忽略的鼻息之間。
論時間，三個獨特的私密，像是在這時間河無限向外擴散的生命體裡，共存的小宇宙，又像是膠卷影片裡抽出的影格。在流動的時間感中，記憶反覆而重現，不時紙微的時間差，如頁頁石材裏的機密形包圍，是初心，是過去，體驗的具體穿梭，是現在，是當下，流動的視覺與色調，是未來，是科幻。

在不斷跳躍的視覺與時空的旅行之間，在理性解析之外，我們才真正發現空間的“感性之美”。







DN INNOVACION—VISUAL TASTE

SEEMINGLY MONTAGE'S GORGEOUS APPEARANCE, BUT COVERING DEEPER MEANINGS AND PROFOUND RATIONAL RESOLUTIONS.

DN INNOVACION, DESIGNED FOR A FINE DINING SPANISH RESTAURANT LOCATED AT THE MOST SOPHISTICATED AREA OF THE XIN YI DISTRICT IN TAIPEI CITY, TAIWAN. FROM A PLAIN HUGE CUBICLE DESIGNATED FOR BANKING PURPOSES IN THE BEGINNING, IT IS TRANSFORMED INTO AN UNIQUE SCULPTURAL YET MODERNISTIC SPACE TO EMBELLISH THE INNOVATIVE GOURMET CREATION OF THE RE-KNOWN CHEF DANIEL NEGREIRA.

ADOPTING STREAMLINED PARTITIONS, THE SPACES WITHIN THE RESTAURANT FLOW SMOOTHLY TOGETHER, FEATURING DIFFERENT DIMENSIONS AND VISUAL IMPACTS AT THE EVERY STEP TAKEN. THE

COMPLEX ROUTE OF LINES EMBEDDED WITHIN THE STRUCTURE REINFORCES THE CONNECTIVITY AMONG ALL DIMENSIONS CREATED. BY ENTERING THE RESTAURANT, A WHOLE NEW JOURNEY OF SENSES IS REVEALED, JUST AS THE DISHES PREPARED BY THE CHEF DANIEL NEGREIRA, BRINGING THE UNEXPECTED AND THE SPECTACULAR. TRANSPARENCY AND OPAQUENESS IS MERGED INTO THE SAME DIMENSION CREATING A CONTRASTING BUT HARMONIOUS EFFECT.

CONTEMPORARY AND FUNCTIONAL, THREE DISTINGUISHED INDEPENDENT VIP BOXES ARE DESIGNED TO MEET DIFFERENT PRIVACY NEEDS OF THE GUESTS: ONE OFFERING A COMPLETE VIEW OF THE RESTAURANT, ONE VEILED BY CURTAINS AND THE LAST CLOSED TO OFFER TOTAL ISOLATION. A SPECIAL CHEF'S TABLE STANDS AT

THE CORE OF THE RESTAURANT OFFERING THE PREMIUM FRENCH KRUGER'S CHAMPAGNE.

METALLIC MIRROR-LIKE MATERIALS ARE PARTIALLY USED ON THE CEILING, CREATING ILLUSIONS OF A VIVID RIVER FLOWING ABOVE AND PRESENTING DREAMLIKE IMAGES BY STANDING BELOW. THE YELLOWISH SHADE OF LIGHTS JUXTAPOSES WITH TONES OF SPANISH RED GENERATING A TRANQUIL AMBIENCE EXPOSING TRAITS OF THE CHEF'S HOME COUNTRY. FURNITURES WITH PARTICULAR TEXTURES AND COLORS ARE CUSTOMIZED TO INTEGRATE ALL ELEMENTS INTO ONE, MAKING THEM A PART OF THE EXTENSION OF THE WHOLE SPACE.