

TID 2012 Award
Taiwan Interior Design

居住空間/複層 Residential space / Multi Level

侘寂居
wabi-sabi house

諾禾空間設計
noir design

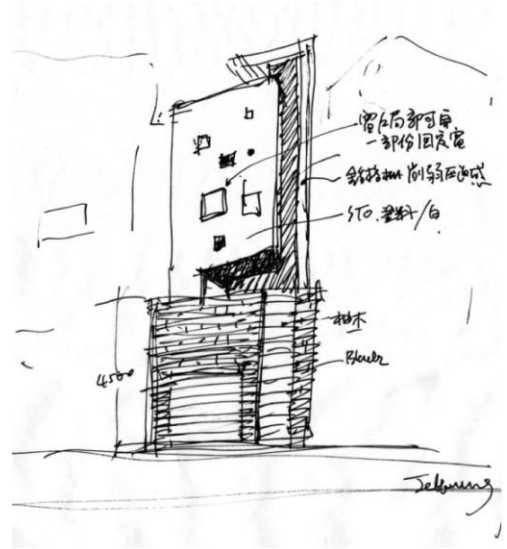
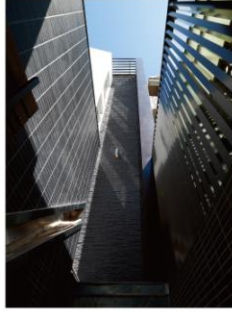
主持設計師
Chief Designer

翁梓富 Jeff Weng

攝影者
Photographer

李國民 Lee kuo min

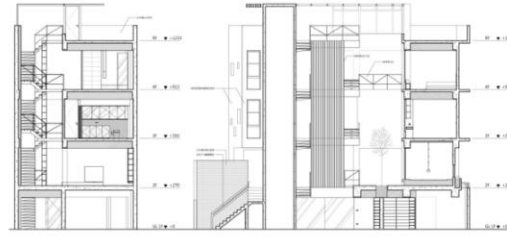
侘寂居—Wabi Sabi house



ELEVATION SKETCH



ELEVATION



SECTION

侘寂居—Wabi Sabi house

概念說明

此建築案座落於新竹市，基地的正面臨六米巷，兩側為鄰房，後方目前為一空地（未來也可能會蓋房子），考慮到未來基地後方若蓋起建物，正面則成唯一採光面。而六米巷弄間的棟距，則對隱私性產生壓迫感。

將建物正面開設數個小窗戶，來保有住家的隱私性及通風效果，2樓露台女兒牆也高於一般女兒牆許多，來隔絕鄰房的窺視。室內則透過天井達到採光作用，所有的空間也圍繞著天井做延伸。

CONCEPT

The building of this case is located in Hsinchu City on a six-meter lane with neighboring houses on both sides. The lot to the rear of the building is currently empty, however there are tentative plans for a structure in this place, which would leave the front side as the only side with direct natural light.

The facade facing the six-meter lane includes windows and parapets of the second floor that are higher than standard to increase privacy and ventilation.

The interior design utilizes a courtyard style to cast natural light throughout the adjoining rooms.



First floor



Second floor



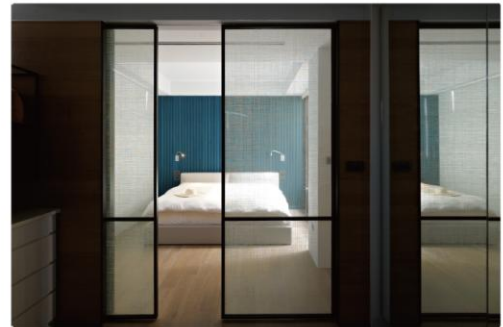
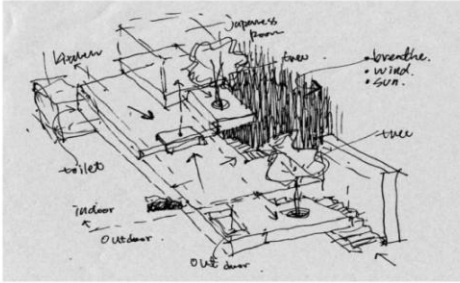
Third floor



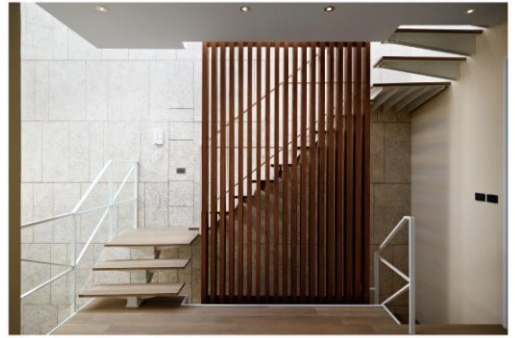
Fourth floor



Fifth floor



侘寂居—Wabi Sabi house



侘寂居—Wabi Sabi house

