

**TID** 2012 Award  
Taiwan Interior Design

居住空間/複層 Residential space / Multi Level

30年後－陳宅  
After Three Decades – The Chens' Residence

山隱建築室內裝修設計有限公司  
Sign architecture & interior design Co.,Ltd.

主持設計師  
Chief Designer

何武賢 HO WU HSIEN

協同設計師  
Co-designer

呂嫦謀 LU CHANG MOU

攝影者  
Photographer

高政全 Richard Kao

# 30年後 — 陳宅



## 空間元素

實木水平遮陽百葉  
方形烤漆金屬框架  
枕木水流造景  
原生玉蕊花樹木

## Elements of Space

The Horizontal Real Wood Sun Protection Screens

The Rectangular Metal Framework with a Baked-on Paint Finish

Pond Landscaping with a Railway-Tie Raised Garden Bed Waterfall

The Original White Champak Tree

Based on the concept of eco-friendliness, the renovation project focuses on the change of the architectural appearance, integrates outdoor landscape with indoor space, identifies the rhythm of the interaction among sunlight, air, green plants, and the living culture of the occupants, and creates a living space that puts nature, humanity, and function on an equal footing.

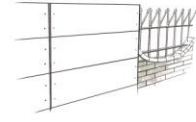
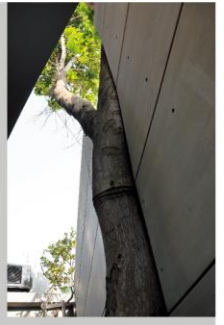
環保概念之舊屋改造  
以建築外觀為主軸，內外串聯景觀與室內空間  
找出陽光、空氣、綠色植栽與屋主生活文化相互關係之律動  
營造出自然、人文、機能並重之居家空間



共生一

保留水泥板圍牆，保留一處，  
嵌入大自然的曲線。

左側三層樓  
右側四層樓



環保簡潔圍牆

簡單內外包覆方式對換水泥板，在  
環保與經濟的原則下，不破壞原始的  
老舊圍牆，整合後更具現代感。

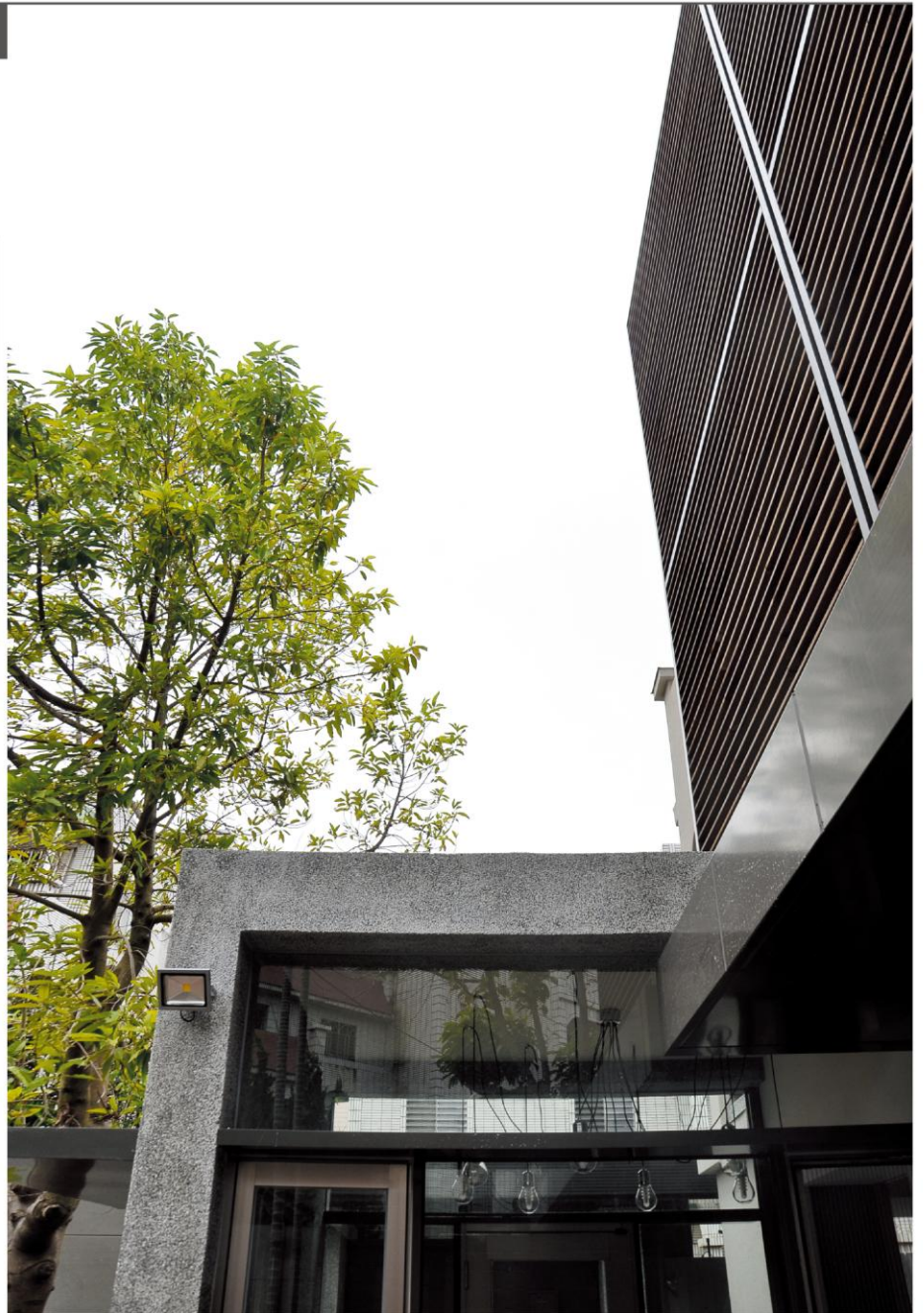
Enclosing Walls of Eco-Friendliness and Simplicity

Upon the principles of eco-friendliness and cost-effectiveness, the original enclosing walls are not ruined but wrapped in cement boards symmetrically fastened with screws, which also adds a sense of modernity to the renovated walls.

> Architecture

外觀採外加骨架，以垂直、水平的線條整合凌亂的窗框、窗孔，用實木材質軟化生硬的水泥磚牆，並遮掩陽光以防直接曝曬。

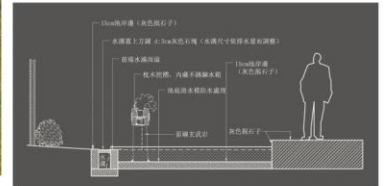
Skeletal frameworks are added to the construction exterior. The vertical and horizontal lines integrate the disordered window frames and openings, while the real wood material softens the sense of hardness of the cement brick walls and keeps the construction from direct sunlight.





#### 五行瀑布盆器

取自天然材料，鐵、木、石，合組一個流水小瀑布盆器；搭配池岸水草及群聚金鯉，形成現代風貌的庭園野趣氛圍。



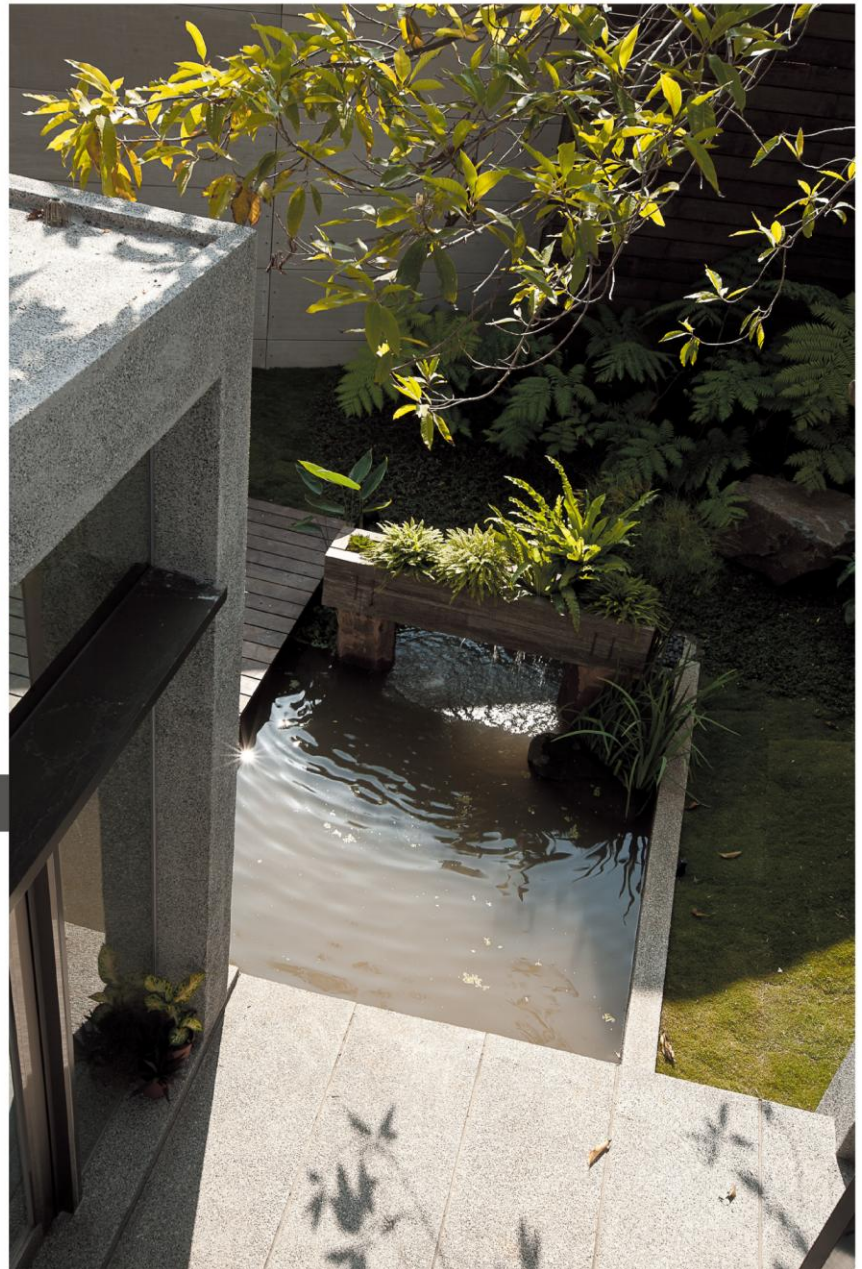
### > Landscape

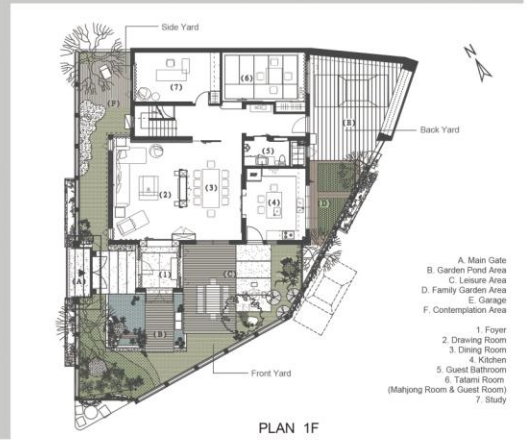
#### 可愛的景觀—親子菜園 (Family Garden Area)

枕木菜園路，綠角有生機  
季節蔬菜綠，可愛景觀區

#### Five-Element Waterfall Garden Design

Such natural materials as iron, wood, and stone are combined to create a railway-tie raised garden bed waterfall. The waterfall as well as the water plants by the pond and the clustered golden ferns embodies the love of wildness in a modern garden.





> Landscape



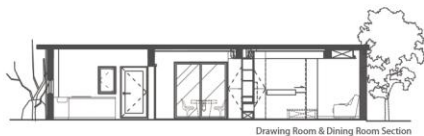
自然野趣·现代禅境  
不多著墨·反凉本心



### The Ground Floor Space amid Light, Air, and Greenness

The open indoor space that offers an unobstructed view, the outdoor greenness that pours into the ground floor through large windows, and the furniture of modernity and simplicity that is placed inside promote perfect harmony between humanity and nature.

## Interior

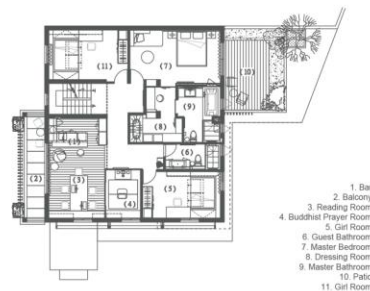


Drawing Room & Dining Room Section



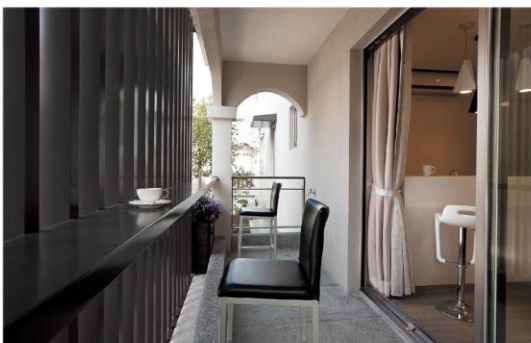
### 穿梭在光、氣、綠的1樓空間

空間無礙，視覺無限，大量收盡庭園綠意，展現現代感與環保，自然與人文相互融合。



1. Bar
2. Balcony
3. Reading Room
4. Buddhist Prayer Room
5. Gift Room
6. Guest Bathroom
7. Master Bedroom
8. Dressing Room
9. Master Bathroom
10. Patio
11. Gift Room

PLAN 2F



### The Transformed Staircase

Only a few rails and posts are used to form a safety fence, transforming the staircase into an art installation with geometric patterns.



### 改造後的樓梯

少量的鐵條交織構築安全圍欄，形成一幅幾何圖形的裝置作品。

### 2F居家主要空間

悠遊陽台、長廊與吧檯，閱覽書香、茶香伴花香。  
主臥室外大露台，深植大型流蘇、綠葉花樹，晨光初現，蟲鳴鳥叫，宛如深居大院。





玉蘭樹梢隨風搖  
 花開滿庭香氣飄  
 啜飲一杯濃咖啡  
 漫吟午後偷閒情



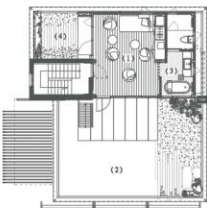
Housework Bakery

## Interior



1. Living Room
2. Housework Balcony
3. Dining Room
4. Master Bedroom
5. Master Bathroom
6. Guest Bathroom
7. Tatami Room
8. Storeroom
9. Bedroom

PLAN 3F



1. Sky View Room
2. Rooftop Patio
3. Hot Spring Room
4. Patio

PLAN 4F

### The View of Rooftop Hot Spring Room

A footpath made of railway ties as well as pebble flooring makes a visit to the rooftop a simple pleasure.



登高頂樓，從容一日繁雜，巔的湯屋裡見星光點點。



### 屋頂湯屋小景

枕木步遊、地鋪卵石，  
 輕輕觀景竟到即止。

