

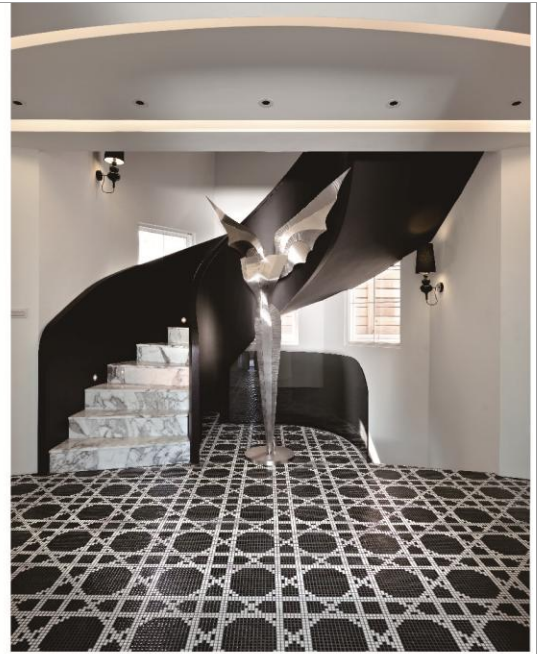
TID 2012 Award
Taiwan Interior Design

居住空間/複層 Residential space / Multi Level

永晝 永夜
Eternal day, eternal night

雲邑室內設計
YUN-YIH DESIGN COMPANY

主持設計師 Chief Designer	李中霖 Lee Chung Lin
協同設計師 Co-designer	林琬玲 Lin Wan Lin
	方雅文 Fang Queenie
攝影者 Photographer	李國民 K. M. Lee



永晝 · 永夜

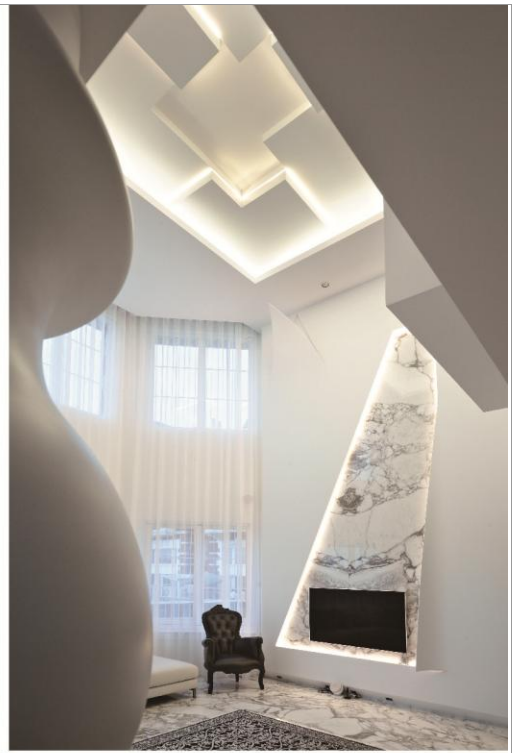
Eternal day, eternal night

大自然的色彩來自光線；來自能量，而空間的色彩；來自素材，更來自對美學的種種領悟與想像。
其中白與黑的組合，不僅是全球時尚圈的永久性話題，也是空間設計裡，關乎變化性、可塑性、爭議性最高的競技項目。

The colors of nature come from light and energy. The colors of space, however, come from the understanding and imagination of beauty.
Black and white isn't only the most sustainable topic in the fashion arena, it's also the most variable, malleable and controversial category.

玄關入口周邊的過渡區域，名家設計的 Bisazza 馬賽克拼花，在地表圍塑出漫射的華麗圖網，途經動線交會處
Starting at the entrance, the Bisazza mosaic tiles weave an elaborate web that leads into the house.





大片鮮明石紋恣意蔓延的明亮廳堂，獨一無二的天然圖騰隨之攀爬至挑高電視牆，別緻的斜梯形層次上，光環圍繞的幾何圖形周邊，另有金屬片上下翻折所形成的柔軟趣味，彷彿豆腐般板塊堆疊的天花板，是另一種仰望時的視覺快感，延續幾何向量的輕盈美感。

Bright marble permeates the bright hall floors, while its natural patterns climbs like vines within a trapezoid pattern surrounded by light. The layered ceiling creates a visual thrill and a different dimension for the curious ones who look upwards.

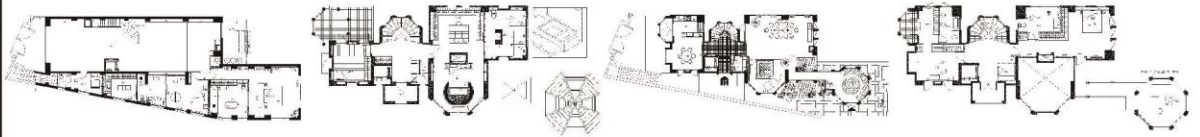




這座自毛胚狀態入手，擁有複數水平加上垂直動線組合而成的獨棟別墅，
即是以黑+白的調和變化，涵蓋材質、軟件、燈飾、傢具、渾圓古典柱體各層面，
作為視覺與結構的構圖軸心，同時彰顯調性極簡卻內容繁複的藝術價值。

This mansion is composed of multiple horizontal and vertical layers, using different combinations of black + white in building material, cushions, lights, furniture and classical columns as a visual and structural center, while simultaneously manifesting its minimalistic yet complex artistic value.





B1F

1F

2F

3F





一座全黑的優美弧角梯，由下而上串連每個樓層，而底部梯弧圈抱內崢嶸的金屬羽翼燈飾，恰巧是弧線端點收攏的驚歎號！

The jet-black spiral staircase is guarded by a silver angelic figure, completing the graceful ensemble.





環顧開揚通透的場域次元，視覺效果極度繁複的地面，
與其上繁衍的各種物件、燈光和一色純白的天花板、牆面，恰成三等分的強烈反差，
也讓極現代、後現代、超寫實、新古典之間的藕斷絲連，
成為這個世代空間新時尚的積極代言。

Looking around, you will find that the complicated floor-work, the furniture within, and
the simple ceiling and walls create three contrasting styles,
making a connection between Hyper-modernism, Post-modernism, Hyperrealism and
Neoclassicism, making it an energetic spokesperson for cross-generational design.

